

BUFFALO TOWNSHIP ZONING DISTRICTS MAP



LEGEND

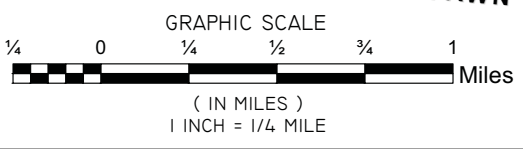
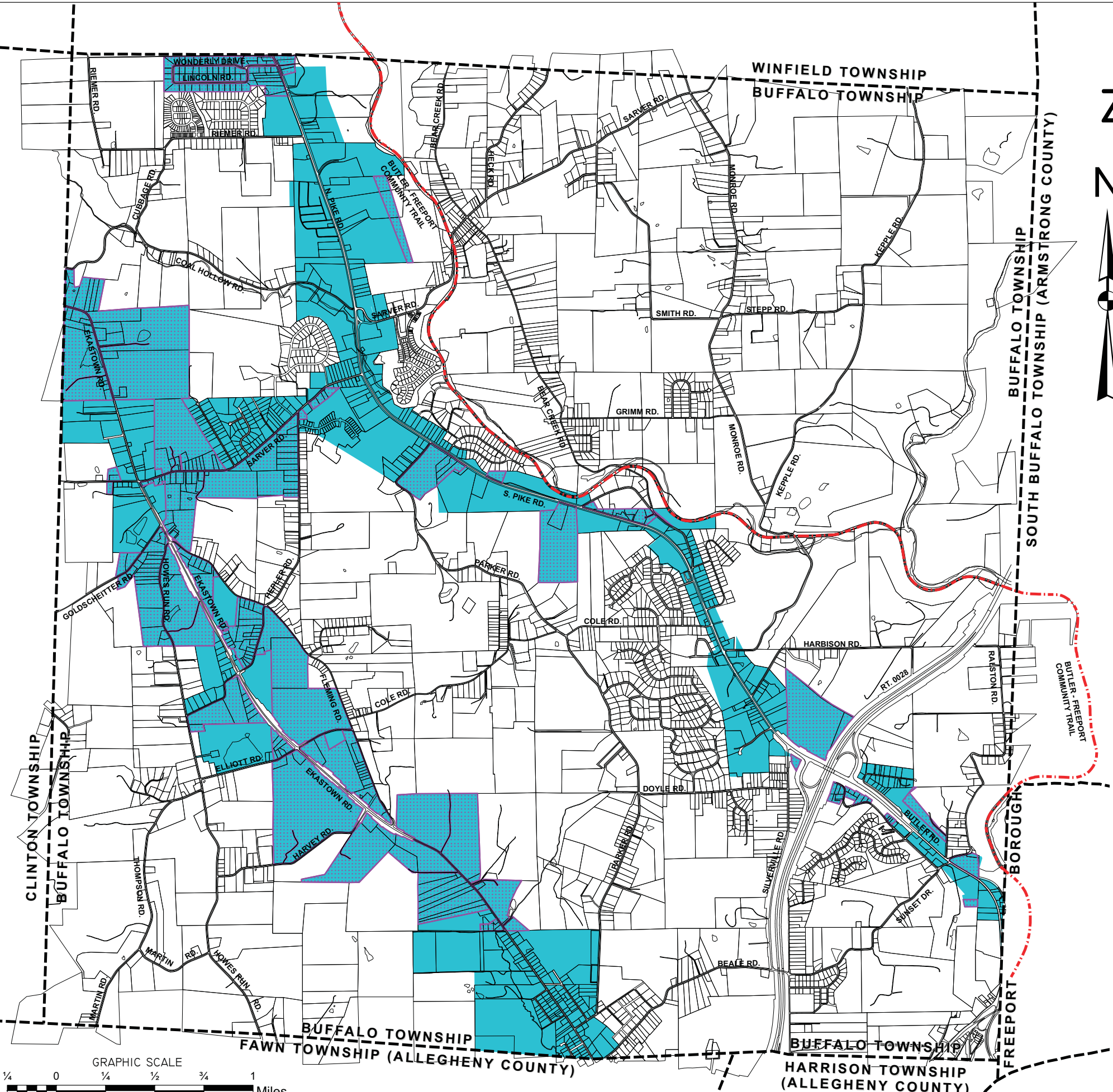
- BUTLER - FREEPORT COMMUNITY TRAIL
- MUNICIPAL BOUNDARY LINE
- PARCEL BOUNDARY

ZONING DISTRICTS:

- A-2 ACCESS MANAGEMENT OVERLAY DISTRICT
- RA RURAL RESIDENTIAL OVERLAY DISTRICT

THIS OFFICIAL ZONING MAP IS PART OF THE ZONING ORDINANCE OF THE TOWNSHIP OF BUFFALO, COUNTY OF BUTLER, COMMONWEALTH OF PENNSYLVANIA, ORDAINED AND ENACTED THIS 12TH DAY OF SEPTEMBER 2018

 SECRETARY	 CHAIRMAN
 VICE-CHAIRMAN	 SUPERVISOR
 SUPERVISOR	
 SUPERVISOR	



<p>ORIGINAL DRAWING SCALE VERIFICATION</p> <div style="text-align: center;"> <p>1"</p> </div> <p>IF LINE IS NOT ONE INCH ON THIS DRAWING, ADJUST ALL SCALES AS REQUIRED</p>	<p>BUFFALO TOWNSHIP</p> <p>BUTLER COUNTY PENNSYLVANIA</p> <p>BUFFALO TOWNSHIP ZONING DISTRICTS MAP</p> <p>A-2 ACCESS MANAGEMENT AND RA RURAL RESIDENTIAL DISTRICT OVERLAY</p>	<p>SCALE AS NOTED</p> <p>DATE AUG. 2018</p> <p>DRAWN BY Z.T.F.</p> <p>APPROVED BY K.A.H.</p> <p>SHEETS IN SET 2</p> <p>DRAWING NUMBER I-701-35-2</p>
---	---	--

THIS DOCUMENT, AND THE IDEAS AND DESIGNS INCORPORATED HEREIN, AS AN INSTRUMENT OF PROFESSIONAL SERVICE, IS THE PROPERTY OF BANKSON ENGINEERS, INC., AND IS NOT TO BE USED, IN WHOLE OR IN PART, FOR ANY OTHER PROJECT WITHOUT THE WRITTEN AUTHORIZATION OF BANKSON ENGINEERS, INC.



DOCUMENT PATH: N:\01-BUFFALO, PA\2018-BUFFALO ZONING DISTRICTS MAP 2018\2018-12-01-35-2-BUFFALO ZONING.MXD

COORDINATE SYSTEM: NAD 1983 STATEPLANE PENNSYLVANIA SOUTH FIPS 3702 FEET / PROJECTION: LAMBERT CONFORMAL CONIC / DATUM: NORTH AMERICAN 1983